

82°4'30"E

82°6'0"E

Mapping of Urban Tanks / Rivers and Changes Yeleswaram Urban Local Body, East Godavari District, Andhra Pradesh

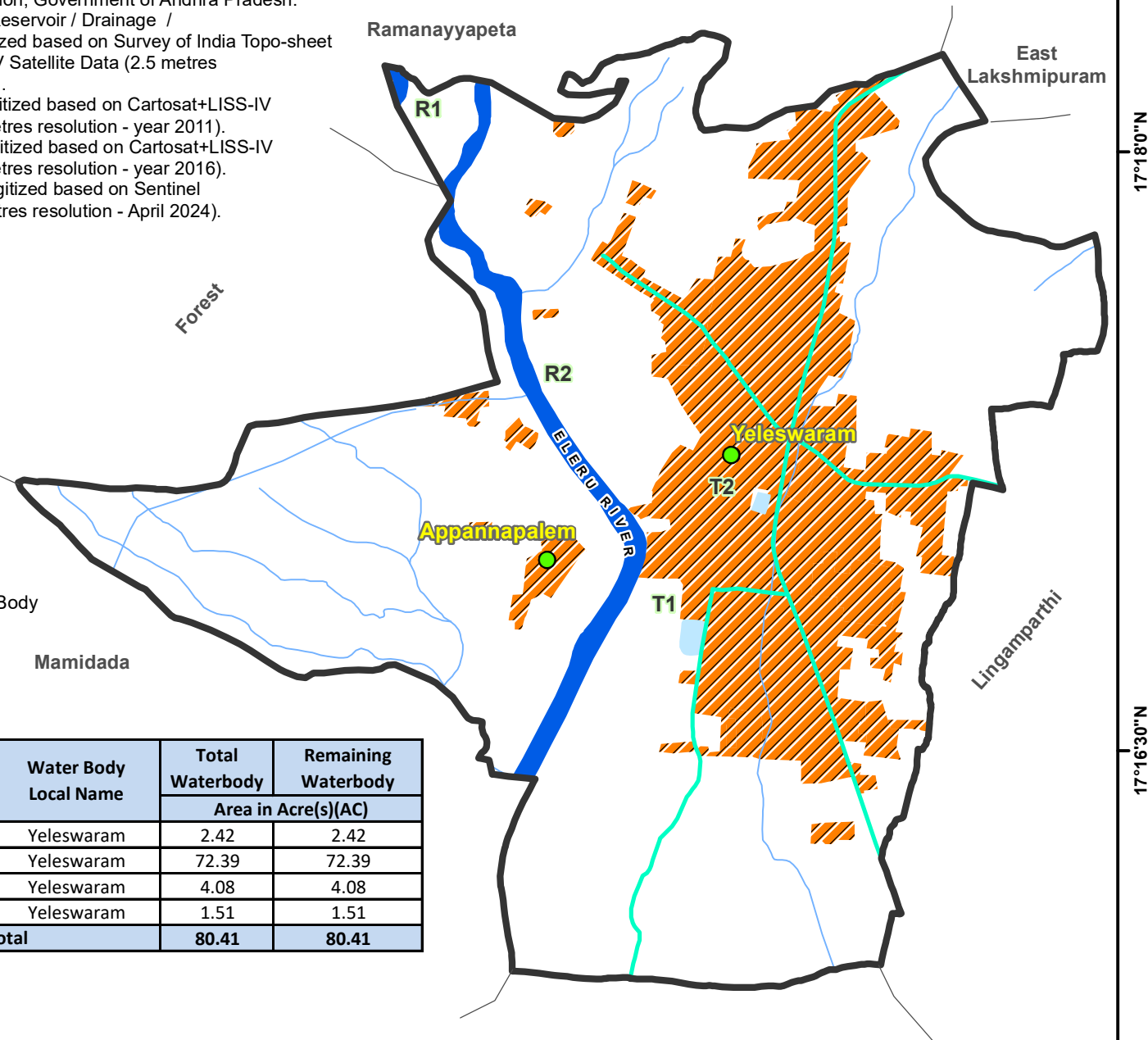


Data Source:

1. Urban Local Body Boundary provided by the Commissioner and Director of Municipal Administration, Government of Andhra Pradesh.
2. Tank / Lake / River / Reservoir / Drainage / Canal boundary digitized based on Survey of India Topo-sheet and Cartosat+LISS-IV Satellite Data (2.5 metres resolution) year 2011.
3. Changes of 2011 digitized based on Cartosat+LISS-IV Satellite Data (2.5 metres resolution - year 2011).
4. Changes of 2016 digitized based on Cartosat+LISS-IV Satellite Data (2.5 metres resolution - year 2016).
5. Changes of 2024 digitized based on Sentinel Satellite Data (10 metres resolution - April 2024).

Legend

- Habitation
- District Road
- Drainage
- Settlement
- R1 River
- T1 Tank
- Urban Local Body



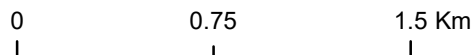
S.No	Waterbody Name (Refer Map)	Water Body Local Name	Total Waterbody	Remaining Waterbody
			Area in Acre(s)(AC)	
1	River(1)	Yeleswaram	2.42	2.42
2	River(2)	Yeleswaram	72.39	72.39
3	Tank(1)	Yeleswaram	4.08	4.08
4	Tank(2)	Yeleswaram	1.51	1.51
Grand Total			80.41	80.41

Coordinate Reference System:

Datum: WGS84

Projection: UTM Zone 44N

Note: This map and contents are required to be ground-truthed and vetted by the Collector and District Magistrate, East Godavari District and the Stakeholder Departments.



82°4'30"E

82°6'0"E

Prepared By



Andhra Pradesh Space Applications Centre
ITE & C Department, Govt., of A.P.
Vijayawada - 520010

17°18'0"N

17°18'0"N

17°16'30"N

17°16'30"N